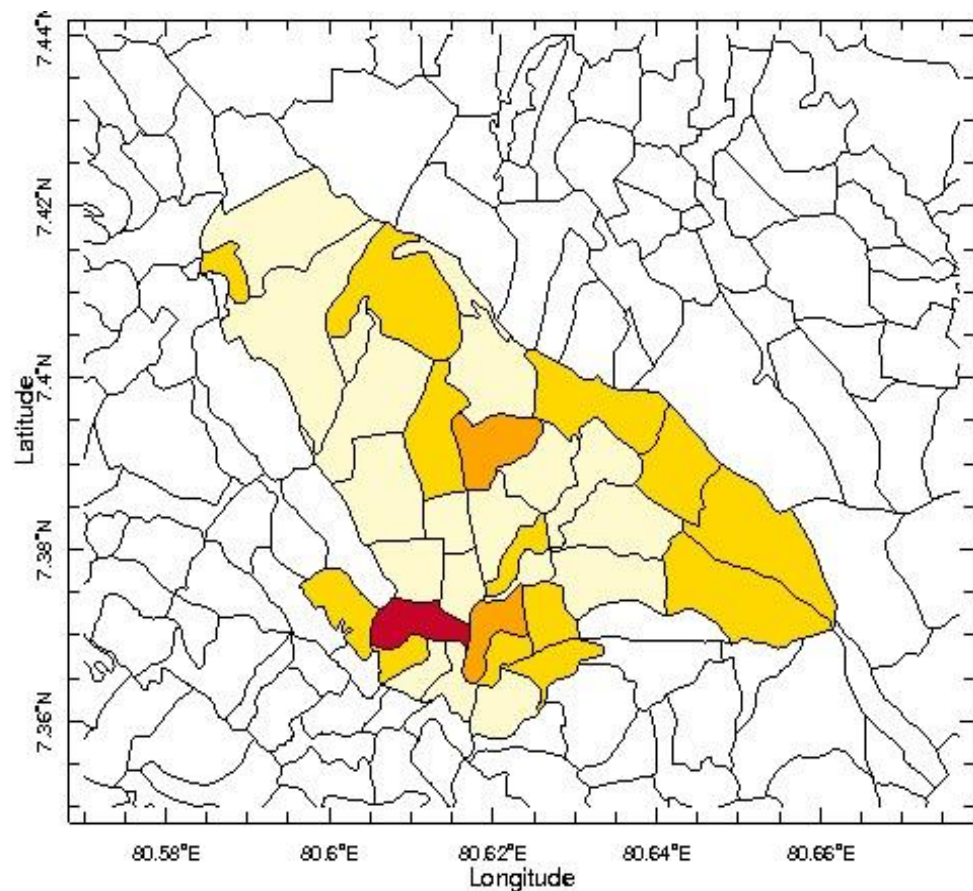


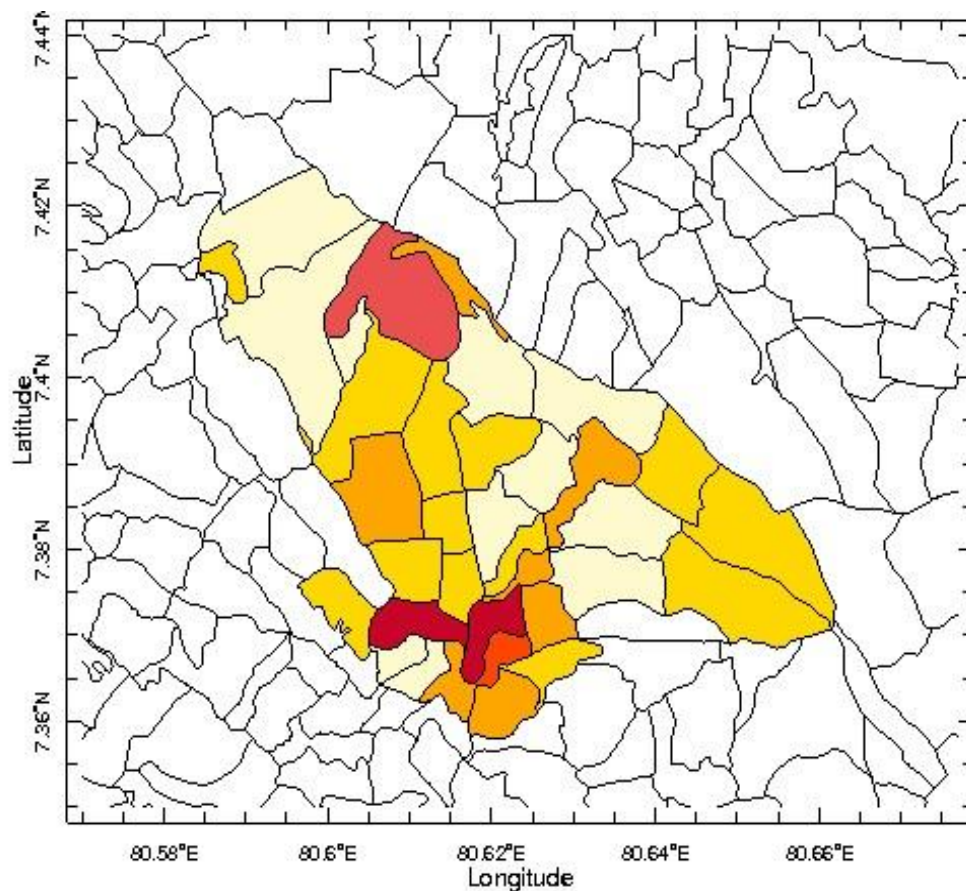
Examples of Mapping of Dengue case and Entomological data

Here we provide samples of mapping the Entomological data and Dengue case data at a Village level for on of the Ministry of Health Sub-Districts. There are around 300 such sub-districts in Sri Lanka.

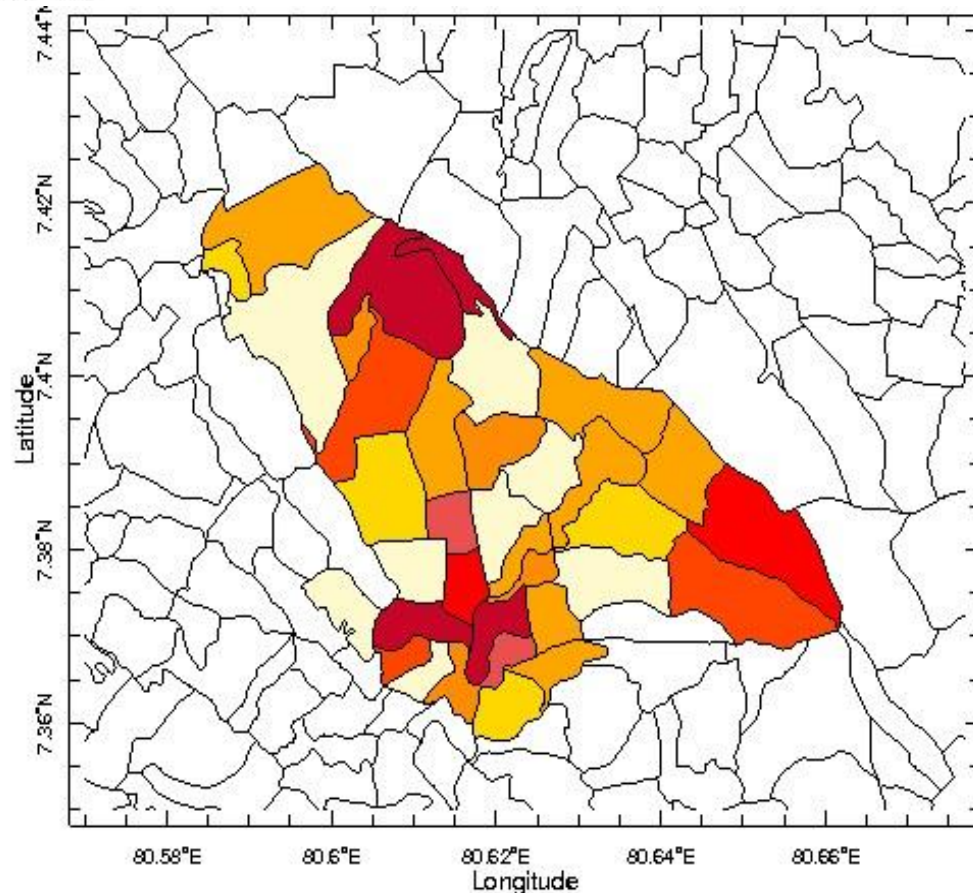
Quarterly Dengue Cases for the Akurana Medical Officer of Health (MOH), Central Province by Grama Niladhari Divisions for 2018



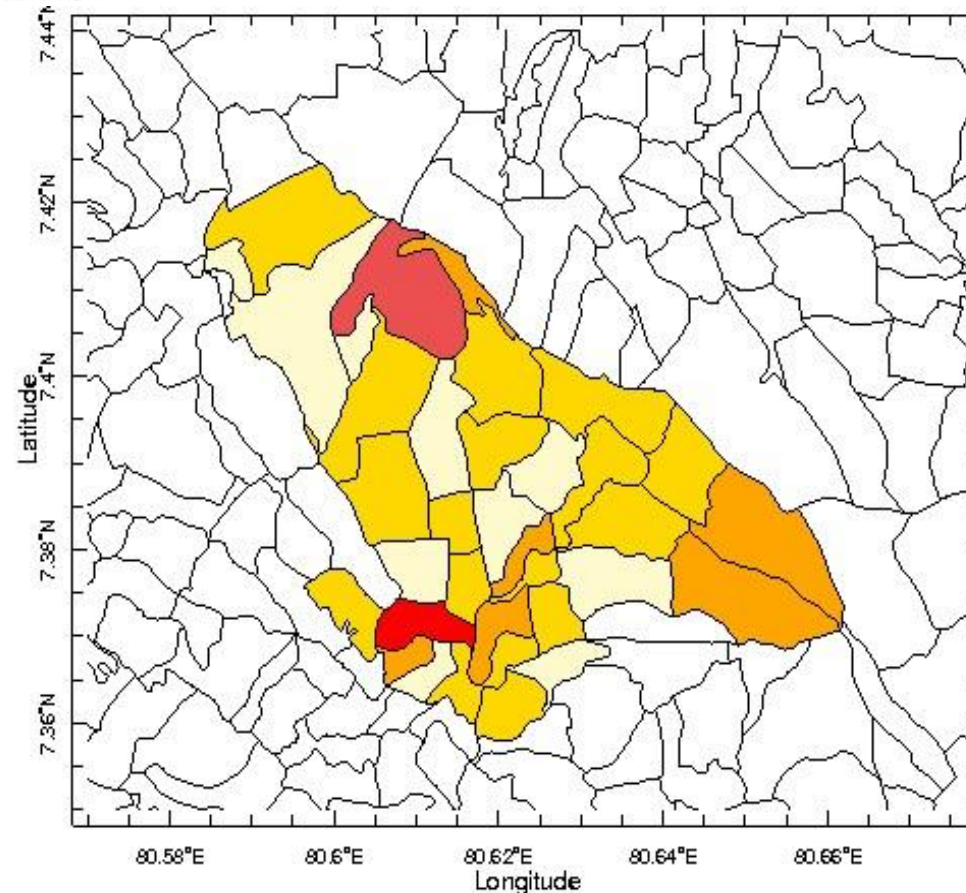
Jan-Mar 2017



Apr-Jun 2017



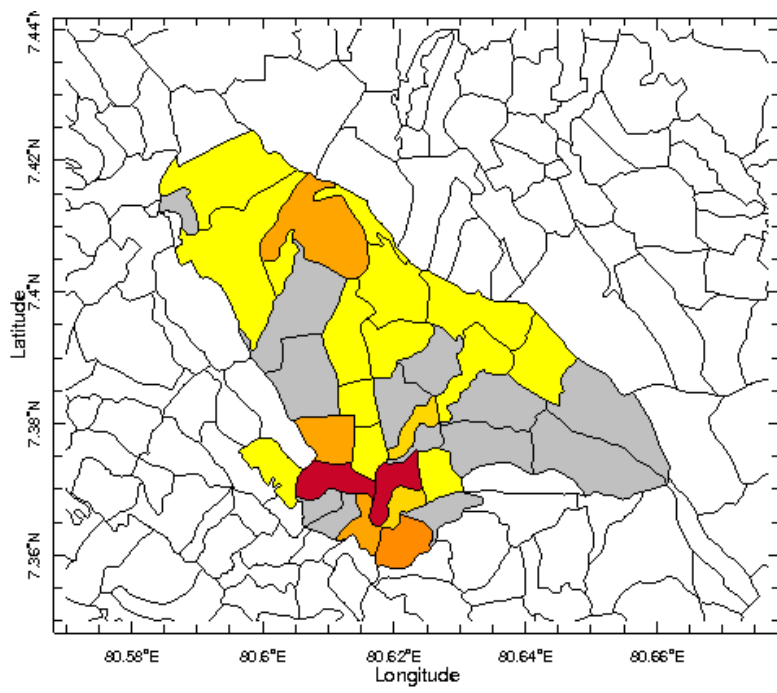
Jul-Sep 2017



Oct-Dec 2017



Annual GN wise distribution of Identified Ae. Albopictus in the Akurana MOH



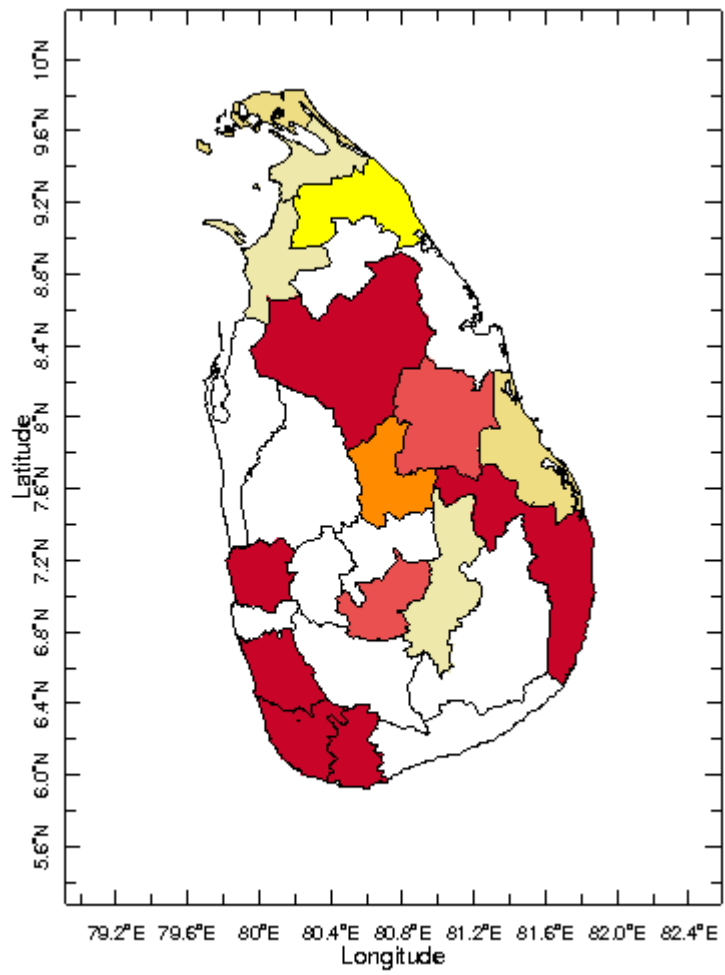
Color Scale cutoff points

(-4) to (-2) - Not identified
(-2) to (0) - not surveyed
(0) to (10) - identified and surveyed (color scale is based on BI values)

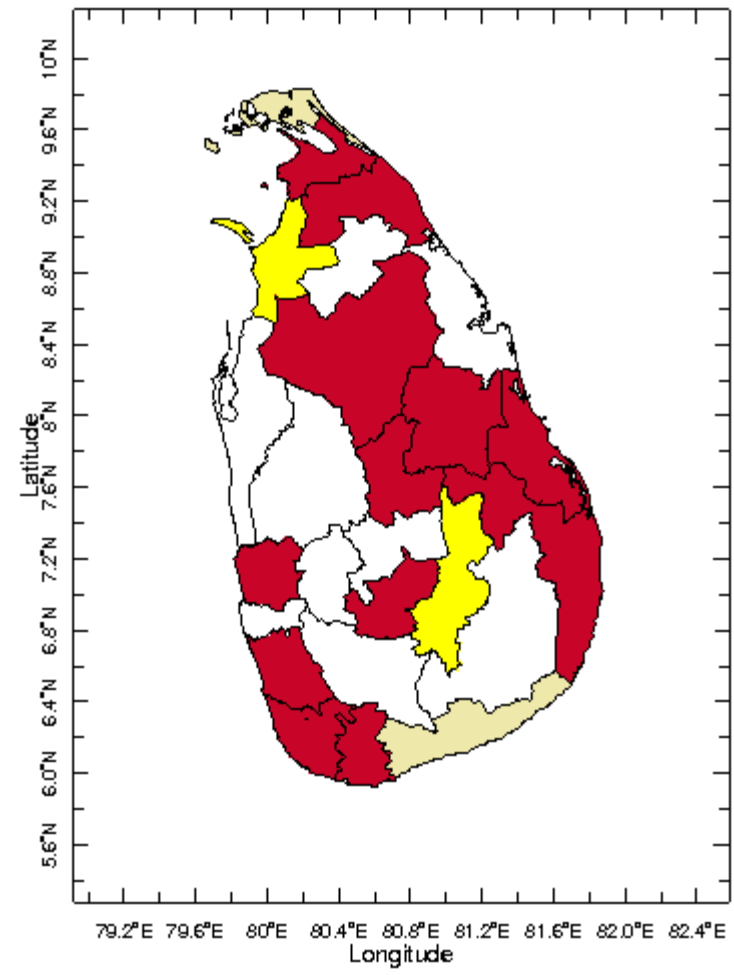


2018

District wise dengue cases in April and May 2019



May 2019



Jun 2019

